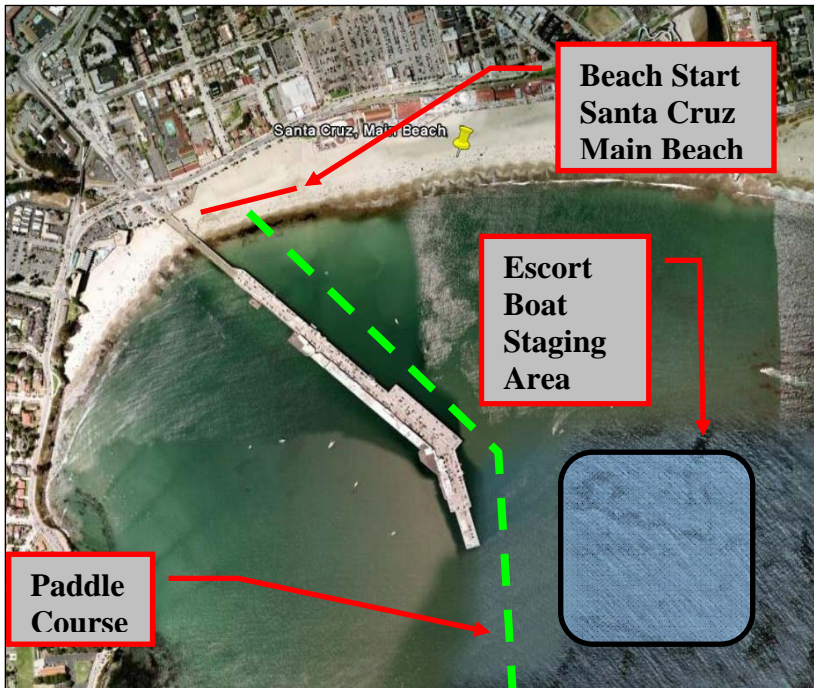
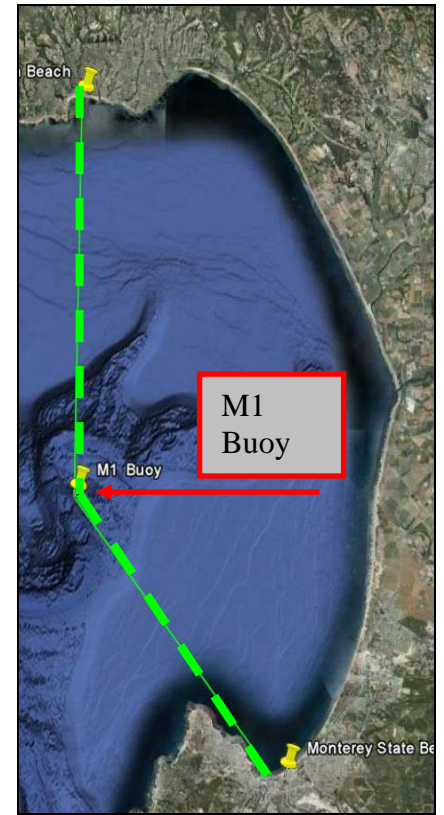


# THE BAY CROSSING Course Information:



**Start** at Santa Cruz Main Beach in front of Ideal Restaurant on the east side of Santa Cruz Wharf. Escort boats to remain 200 yards from shore and Wharf at all times. **Finish** at Monterey State Beach on the east side of the Monterey Municipal wharf between cones on sand.

Santa Cruz Main Beach



Monterey State Beach

**Course:** Start Main Beach, left Shoulder turn at M1 Buoy, finish at Monterey State Beach. 28.5 miles.

**Coordinates Follow:**

**Start - Santa Cruz Main Beach**

36 57 43 N

122 1 12 W

**M1 Buoy**

36.45 0 N

122.1 12 W

**Finish – Monterey State Beach**

36 36 04 N

121 53 12 W

**Contact:** [thebaycrossing@gmail.com](mailto:thebaycrossing@gmail.com)

